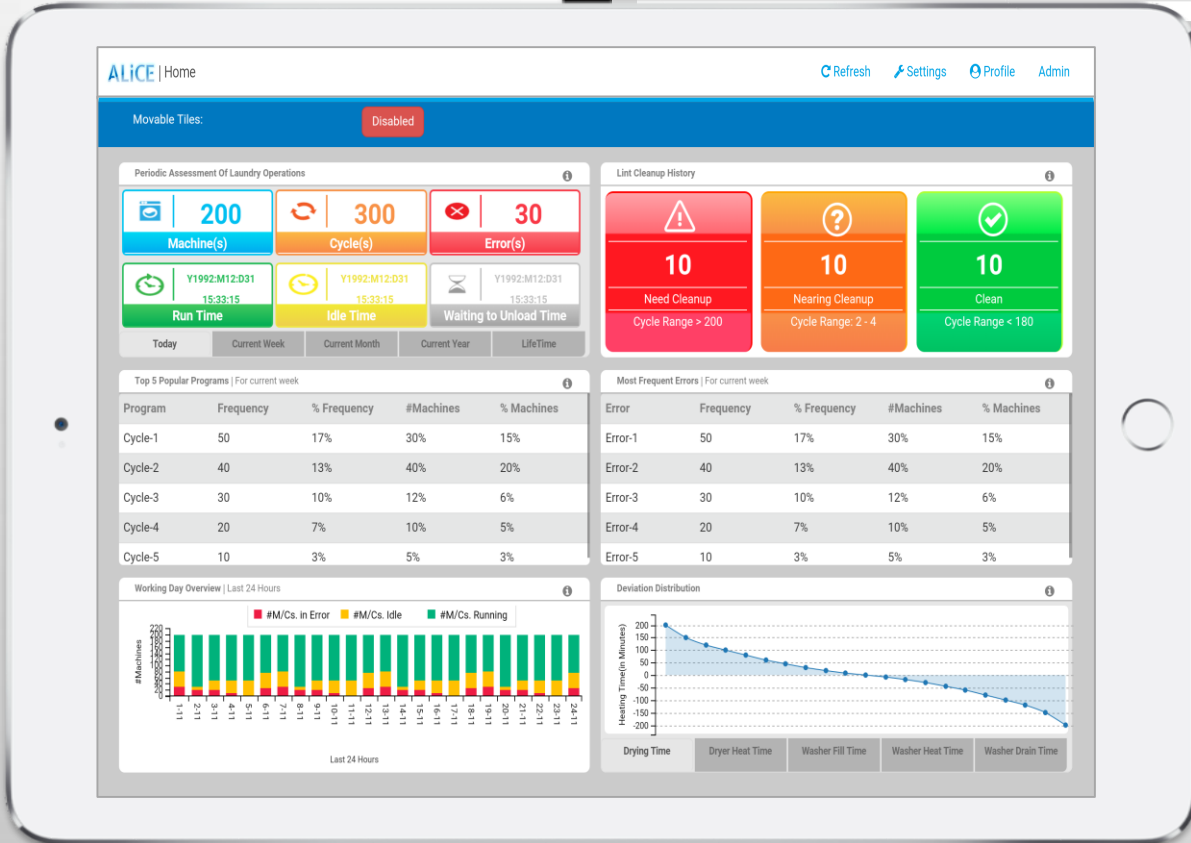
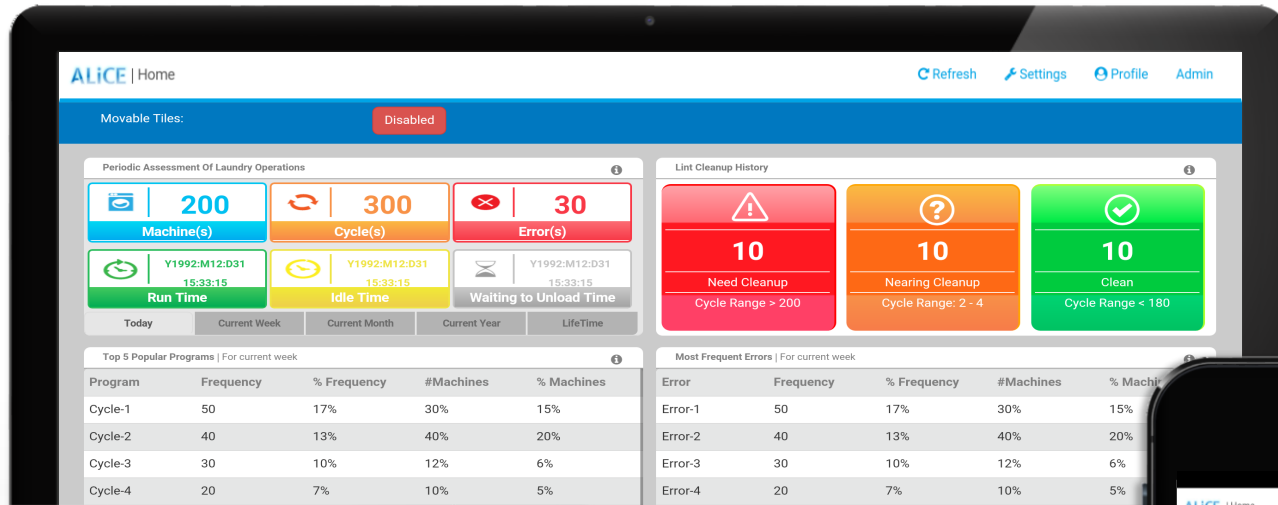




Designer | Developer
DESIGNER | DEVELOPER



UX Design | Laundry System IOT



Login Screen



Admin

Remember Me

LOGIN

[Registration](#)

[Forgot Password](#)



New User Registration

First Name:

Last Name:

Email ID:

User Name:

Password:

Conform Password:

Captcha:



Register

[Login](#)

[Forgot Password](#)

Dashboard

Movable Tiles: Disabled

Periodic Assessment Of Laundry Operations i

200 Machine(s)	300 Cycle(s)	30 Error(s)		
Y1992:M12:D31 15:33:15 Run Time	Y1992:M12:D31 15:33:15 Idle Time	Y1992:M12:D31 15:33:15 Waiting to Unload Time		
Today	Current Week	Current Month	Current Year	LifeTime

Lint Cleanup History i

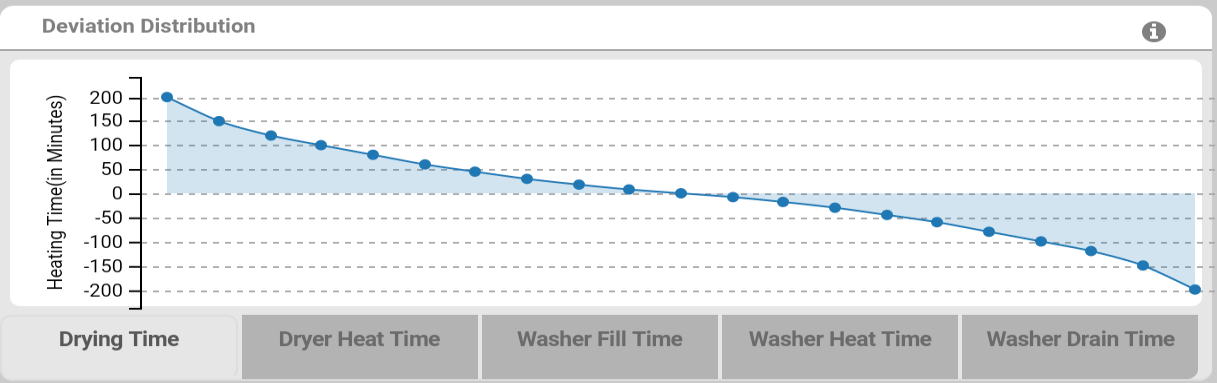
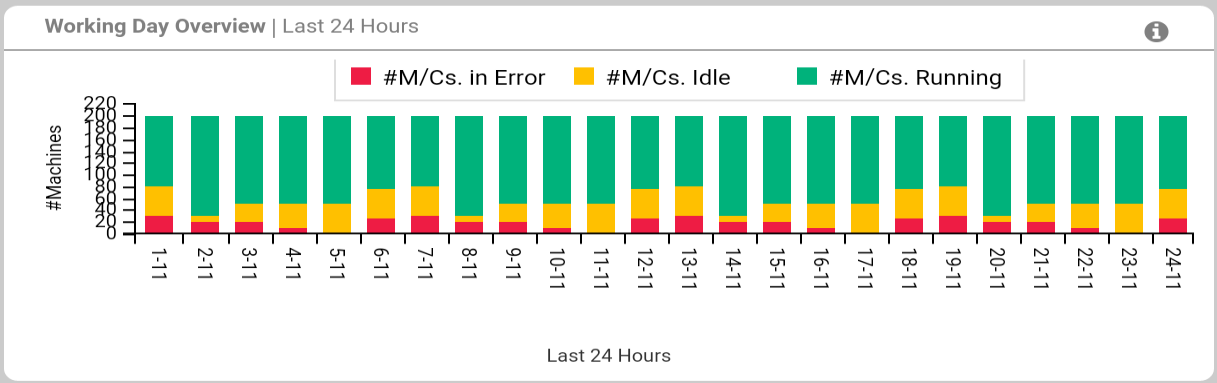
10 Need Cleanup Cycle Range > 200	10 Nearing Cleanup Cycle Range: 2 - 4	10 Clean Cycle Range < 180
--	--	---

Top 5 Popular Programs | For current week i

Program	Frequency	% Frequency	#Machines	% Machines
Cycle-1	50	17%	30%	15%
Cycle-2	40	13%	40%	20%
Cycle-3	30	10%	12%	6%
Cycle-4	20	7%	10%	5%
Cycle-5	10	3%	5%	3%

Most Frequent Errors | For current week i

Error	Frequency	% Frequency	#Machines	% Machines
Error-1	50	17%	30%	15%
Error-2	40	13%	40%	20%
Error-3	30	10%	12%	6%
Error-4	20	7%	10%	5%
Error-5	10	3%	5%	3%



Detail pages for each Tile in Dashboard Page

Start Date:
 End Date:
 Brand:
 Type:
 Machine ID:

Summary View

Detail View

Sr. No.	Brand	Machine Type	Machine ID	Total Cycles	Total Errors	Total Idle Time	Total Run Time	Total waiting to Unload Time
1	Primus	Dryer	0	20	2	37y:1M:6d:10H:2m	1d:14H:54m	00H:00m
2	Primus	FLW	10289420	68	3	37y:1M:5d:17H:45m	2d:7H:11m	3m
3	Primus	FLW	10289557	39	0	37y:1M:6d:10H:9m	1d:14H:47m	00H:00m
4	Primus	FLW	10528246	42	16	37y:0M:15d:8H:14m	23d:2H:42m	1d:17H:1m

Start Date:
 End Date:
 Brand:
 Type:
 Machine ID:

Summary View

Detail View

Sr.No.	Date	Time	Brand	Machine Type	Machine ID	Cycle Length	Cycle Start Time	How Cycle Ended	Total Errors	EOC to Door Open	EOC to Run Mode
1	2017/07/20	16:33:35	Primus	Dryer	0	39	2017/07/20 16:33:35	Normal	0	0	0
2	2017/07/20	16:30:40	Primus	Dryer	0	37	2017/07/20 16:30:40	Normal	0	0	0
3	2017/07/20	16:30:17	Primus	Dryer	0	36	2017/07/20 16:30:17	Normal	0	0	0
4	2017/07/20	16:30:16	Primus	Dryer	0	36	2017/07/20 16:30:16	Normal	0	0	0
5	2017/07/20	01:30:24	Primus	Dryer	0	900	2017/07/20 01:30:24	Normal	0	0	0
6	2017/01/07	23:07:38	Primus	Dryer	0	25	2017/01/07 23:07:38	Normal	0	0	0
7	2017/01/06	04:21:30	Primus	Dryer	0	4	2017/01/06 04:21:30	Normal	0	0	0
8	2017/01/06	03:08:24	Primus	Dryer	0	61	2017/01/06 03:08:24	Normal	0	0	0
9	2017/01/06	01:02:06	Primus	Dryer	0	55	2017/01/06 01:02:06	Normal	0	0	0

Start Date:
 End Date:
 Brand:
 Type:
 Machine ID:

Primus

Summary View
Detail View

Sr.No.	Date	Time	Brand	Machine Type	Machine ID	Cycle Length	Cycle Start Time	How Cycle Ended	Total Errors	EOC to Door Open	EOC to Run Mode
1	2017/07/20	16:33:35	Primus	Dryer	0	39	2017/07/20 16:33:35	Normal	0	0	0
2	2017/07/20	16:30:40	Primus	Dryer	0	37	2017/07/20 16:30:40	Normal	0	0	0
3	2017/07/20	16:30:17	Primus	Dryer	0	36	2017/07/20 16:30:17	Normal	0	0	0
4	2017/07/20	16:30:16	Primus	Dryer	0	36	2017/07/20 16:30:16	Normal	0	0	0
5	2017/07/20	01:30:24	Primus	Dryer	0	900	2017/07/20 01:30:24	Normal	0	0	0
6	2017/01/07	23:07:38	Primus	Dryer	0	25	2017/01/07 23:07:38	Normal	0	0	0
7	2017/01/06	04:21:30	Primus	Dryer	0	4	2017/01/06 04:21:30	Normal	0	0	0
8	2017/01/06	03:08:24	Primus	Dryer	0	61	2017/01/06 03:08:24	Normal	0	0	0
9	2017/01/06	01:02:06	Primus	Dryer	0	55	2017/01/06 01:02:06	Normal	0	0	0

Brand:

Select

[Submit](#)

Sr. No.	Dryer Machine ID	Brand	Cycles Since Last Lint Door Opening	Duration Since Last Lint Door Open[Days,Hours:Minutes]	Time of Last Cycle End	Drying Time for Last Completed Cycle [Hours:Minutes]	
1	0	Primus	1	17d:8H:0m	2017-09-04 07:18:28	0m	

Brand:

Select

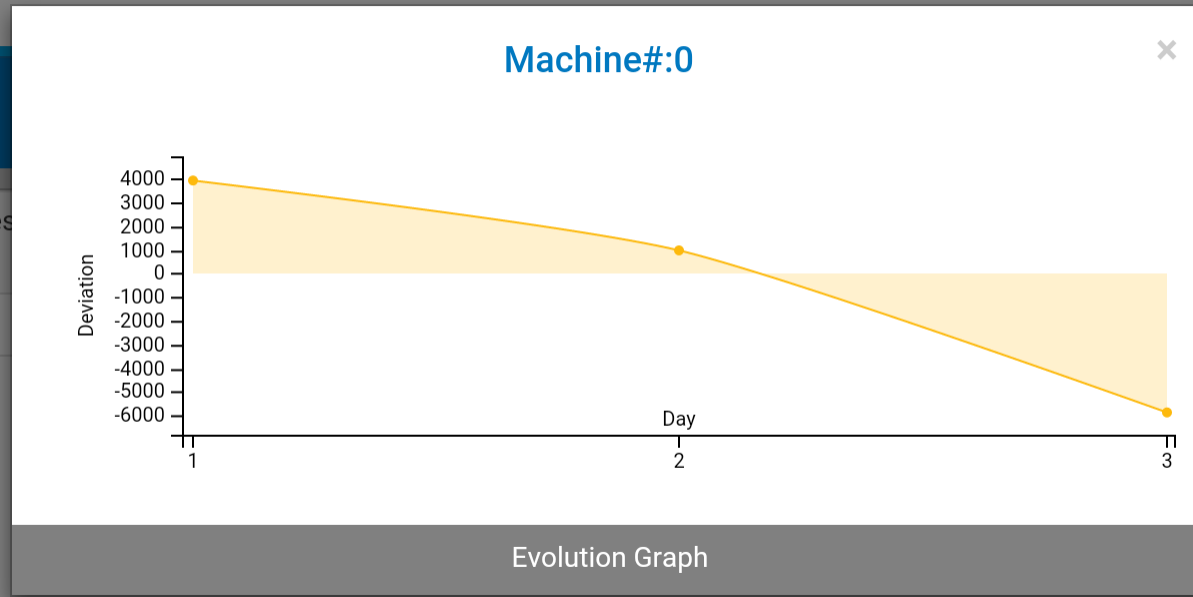


Submit

Sr. No.	Dryer Machine ID	Brand	Cycles
1	0	Primus	

Drying Time for Last Completed Cycle [Hours:Minutes]

0m



Start Date:
 End Date:
 Brand:
 Type:
 Sort By:

Sr.No	Program	Occurrences	Percentage Occ	of Machines	Percentage of Machines
1	+ COLOR INTENS.	115	70.12%	3	75.00%
2	+ BRIGHT INTENS.	6	3.66%	1	25.00%
3	+ ABC	5	3.05%	1	25.00%
4	+ LOW SPIN	5	3.05%	1	25.00%
5	+ TX9HP HOT	4	2.44%	1	25.00%
6	+ TX9E 12kW	3	1.83%	1	25.00%
7	+ WARM 60° INTENS.	3	1.83%	1	25.00%
8	+ WOOLENS	3	1.83%	1	25.00%
9	+ ECO HOT 90°	2	1.22%	1	25.00%
10	+ ECO WARM 60°	2	1.22%	1	25.00%
11	+ TX9E 9kW	2	1.22%	1	25.00%

- Dryer
- FLW

Start Date: End Date: Brand: Type: Machine ID:
 Error Source: Cycle: Cycle Step: Sort By: Dryer FLW

Sr.No	Error	Occurrences	Percentage Occurrences	Number of Machines	Percentage of Machines
1	+ Door Coil	3	23.08%	1	25.00%
2	+ No Fill	3	23.08%	1	25.00%
3	+ Comm fault	1	7.69%	1	25.00%
4	+ Heating Safety 1	1	7.69%	1	25.00%
5	+ No Drain	1	7.69%	1	25.00%
6	+ Overfill	1	7.69%	1	25.00%
7	+ Tilt Fault	1	7.69%	1	25.00%
8	+ Tilt High Sp	1	7.69%	1	25.00%
9	+ unknown error	1	7.69%	1	25.00%

Start Date: End Date: Brand: Type: Machine ID:

Error Source: Cycle: Cycle Step: Sort By:

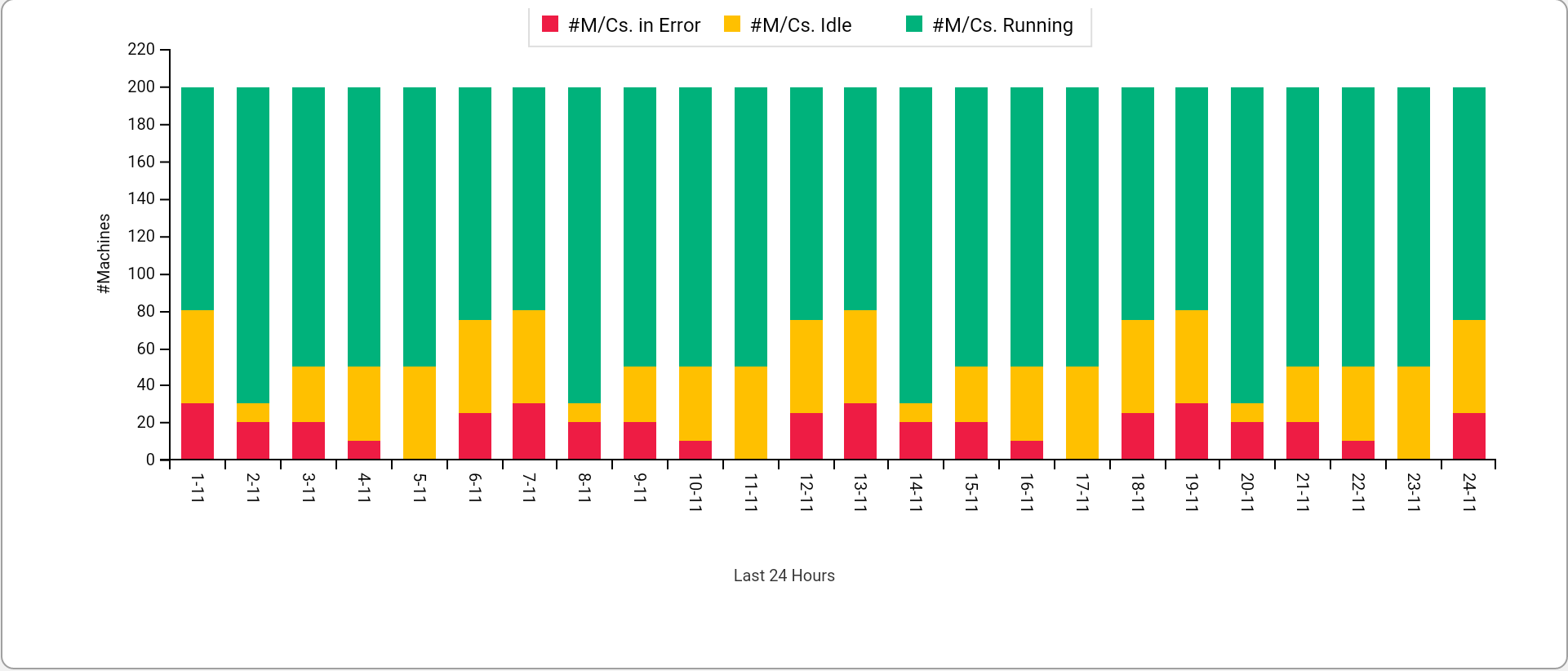
Sr.No	Error	Occurrences	Percentage Occurrences	Number of Machines	Percentage of Machines
1	<input type="button" value="+"/> Door Coil	1	23.08%	1	25.00%
2	<input type="button" value="+"/> No Fill	1	23.08%	1	25.00%
3	<input type="button" value="+"/> Comm fault	1	7.69%	1	25.00%
4	<input type="button" value="+"/> Heating Safety 1	1	7.69%	1	25.00%
5	<input type="button" value="+"/> No Drain	1	7.69%	1	25.00%
6	<input type="button" value="+"/> Overfill	1	7.69%	1	25.00%
7	<input type="button" value="+"/> Tilt Fault	1	7.69%	1	25.00%
8	<input type="button" value="+"/> Tilt High Sp	1	7.69%	1	25.00%
9	<input type="button" value="+"/> unknown error	1	7.69%	1	25.00%

- COLOR INTENS.
- ECO WARM 60°
- HOT 90° INTENS.
- low spin
- Out of Cycle Error
- TX9E 9kW
- WARM 60° INTENS.

Start Date: End Date: Brand: Type: Sort By:

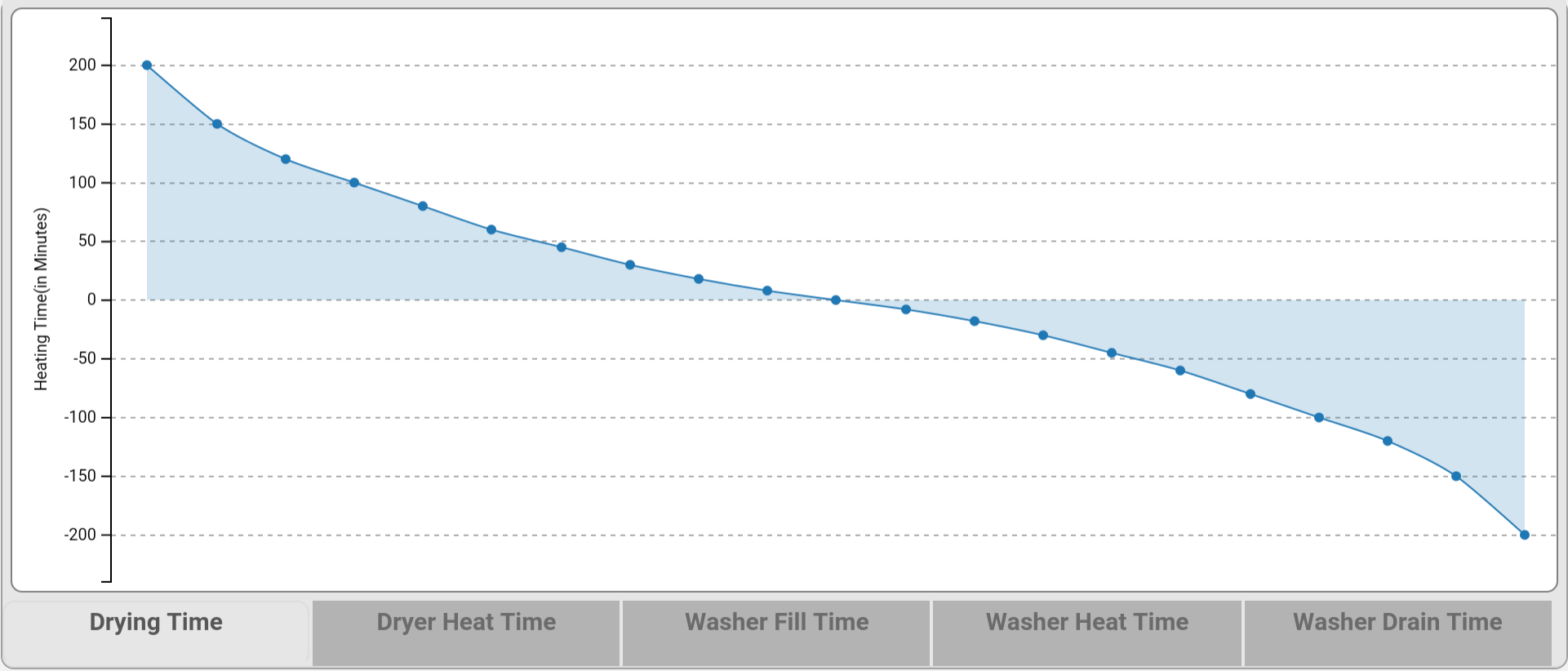
Sr.No	Program	Occurrences	Percentage Occurrences	Number of Machines	Percentage of Machines	
1	COLOR INTENS.	115	70.12%	3	75.00%	
	Sr.No	Brand	Machine Type	Machine ID	Occurrences	Percentage Occurrences
	1	Primus	FLW	10289420	59	35.98%
	2	Primus	FLW	10289557	40	24.39%
	3	Primus	FLW	10528246	16	9.76%
2	BRIGHT INTENS.	6	3.66%	1	25.00%	
3	ABC	5	3.05%	1	25.00%	
4	LOW SPIN	5	3.05%	1	25.00%	
5	TX9HP HOT	4	2.44%	1	25.00%	
6	TX9E 12kW	3	1.83%	1	25.00%	
7	WARM 60° INTENS.	3	1.83%	1	25.00%	

Brand: Type:



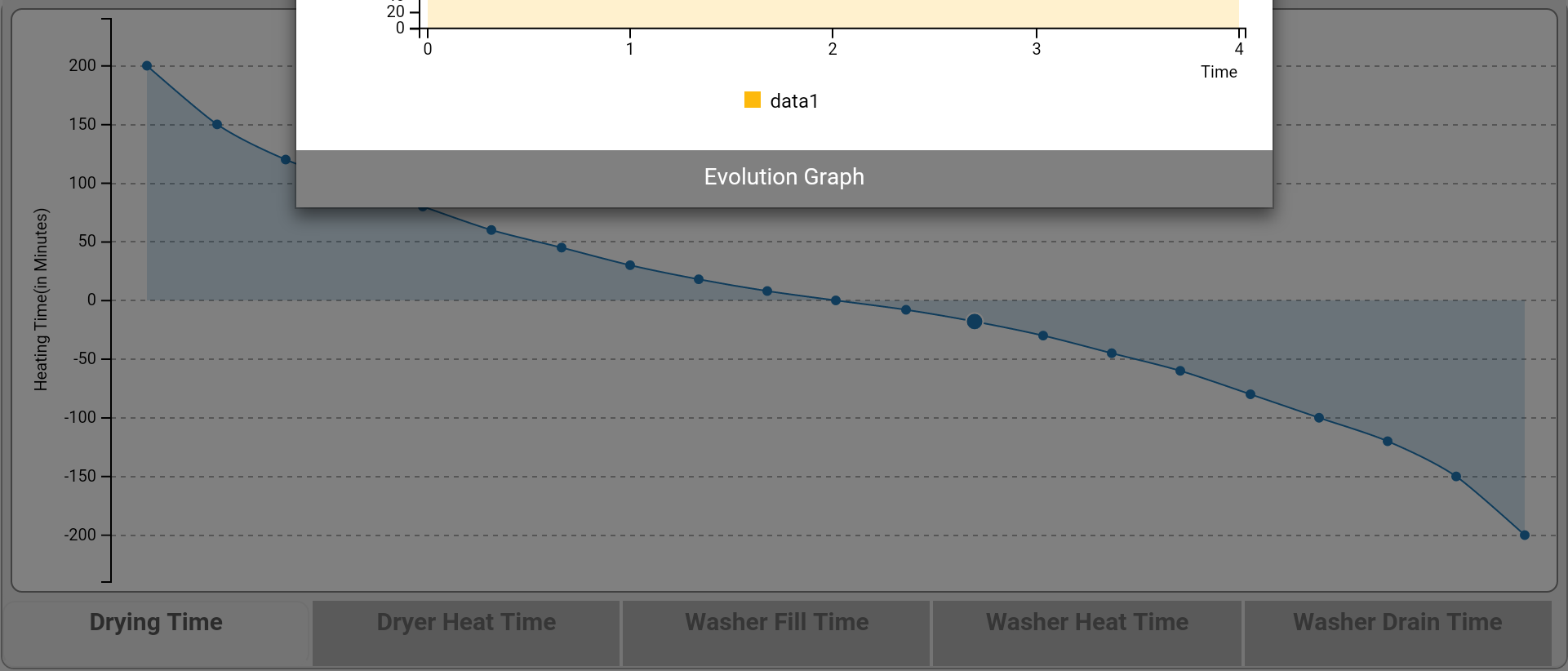
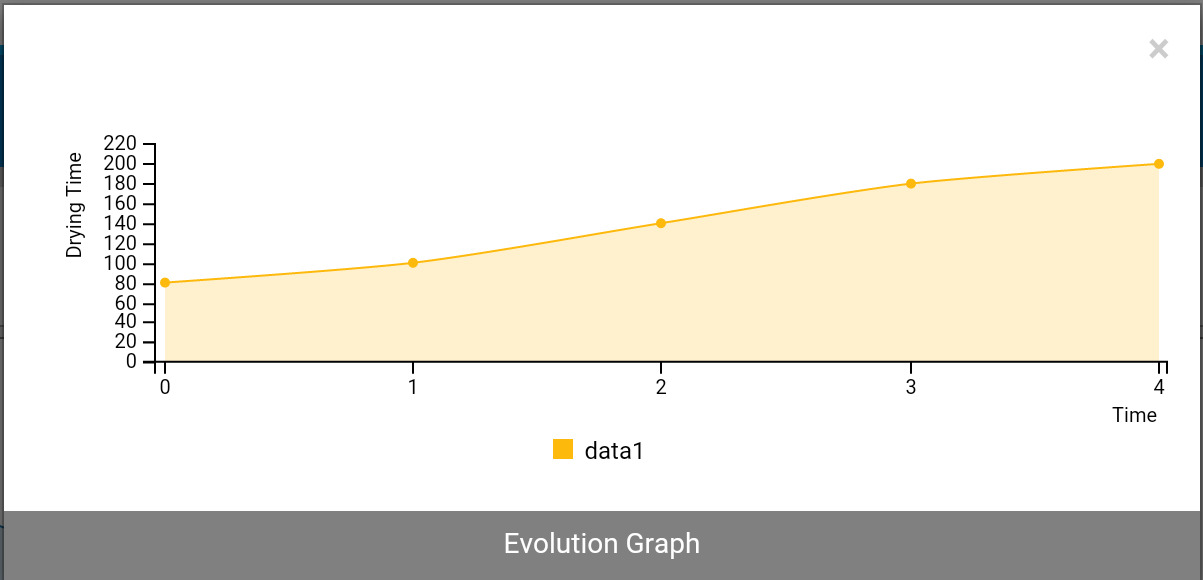
Brand:

Submit



Brand:

Submit





Designer | Developer

Thank you !